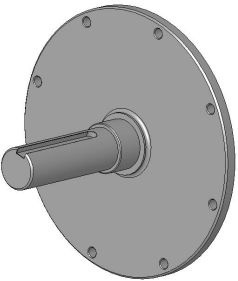
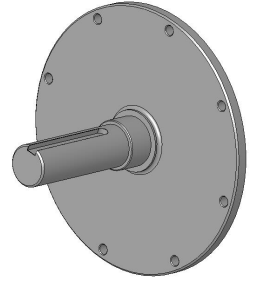
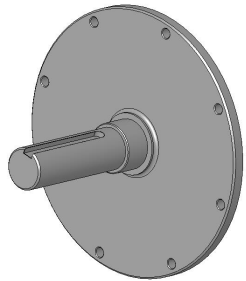
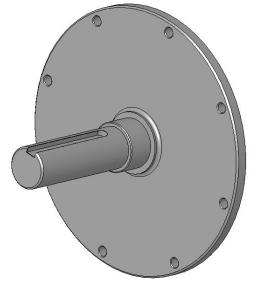
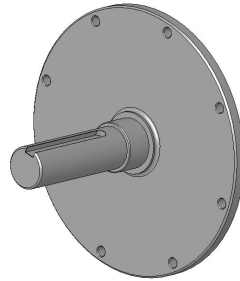
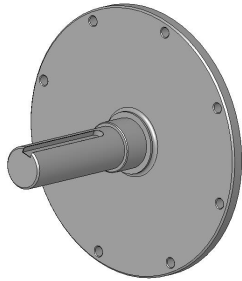
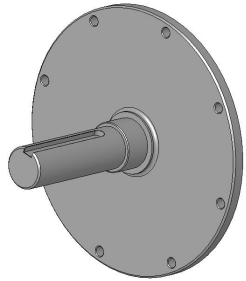
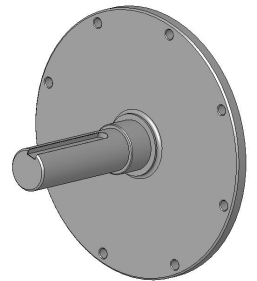
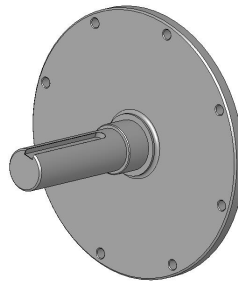
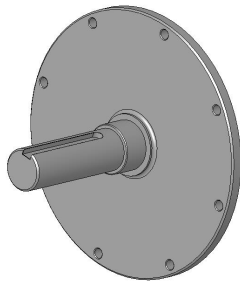
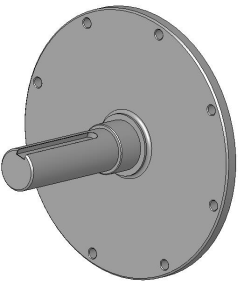
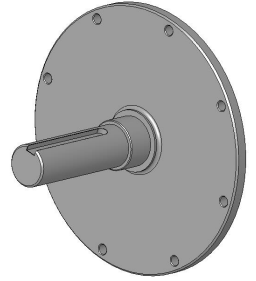




SAE Stub Shafts



SAE Stub Shafts



Hayes Manufacturing, Inc.

6875 U.S. 131

Fife Lake, MI 49633

Phone: (231) 879-3372 Fax: (231) 879-4330

Visit us at www.hayescouplings.com



SAE Stub Shafts

INDUSTRIAL STUB SHAFT DRIVE PLATES
CUSTOM SHAFTS AVAILABLE UPON REQUEST

Stub shaft drive plates fit SAE depressed center flywheels. They are designed for use with a flexible coupler to direct drive auxiliary components. See Hayes L-Series or flexible couplings for shaft-to-shaft adapter to fit your application. Side loading requires the use of a pillow block bearing or Hayes Bearing supported stub shaft option.

When placing an order, please use the part number listed below.

Stub Shaft Drive Plates					
Part Number	SAE Clutch Size	Keyed Shaft	Overall Length	Shaft Diameter	Key Size
26-01A51	6.50"	3.75"	6.00"	1.50"	3/8"
26-02A51	6.50"	3.75"	6.00"	1.75"	3/8"
26-0AA52	7.50"	3.75"	6.00"	1.438"	3/8"
26-01A52	7.50"	3.75"	6.00"	1.50"	3/8"
26-02A52	7.50"	3.75"	6.00"	1.75"	3/8"
26-01A53	8"	Special	Special	Special	Special
26-02A53	8"	Special	Special	Special	Special
26-01G54	10"	3.75"	6.00"	1.50"	3/8"
26-02B54	10"	5.38"	8.00"	1.75"	3/8"
26-03G54	10"	3.75"	6.00"	2.00"	1/2"
26-03B54	10"	5.38"	8.00"	2.00"	1/2"
26-04A55	11.50"	3.75"	6.00"	2.25"	1/2"
26-05A55	11.50"	3.75"	6.00"	2.50"	5/8"



NOTE: Stub shafts for the 14" clutches and larger are available on a non-stock basis. Special sizes, diameters and shaft lengths (keyed and overall) are available upon request. SAE #4 & #5 Side Load Plates available from stock. Ask your customer service representative for more details.

If it is determined that your assembly needs greater side load capabilities than a straight shaft and single bearing design, please contact us to discuss the use of our exclusive bearing supported stub shafts.

PLEASE CONTACT HAYES TO DISCUSS SPECIFIC APPLICATION REQUIREMENTS

Hayes Manufacturing, Inc.
 6875 U.S. 131
 Fife Lake, MI 49633
 Phone: (231) 879-3372 Fax: (231) 879-4330
 Visit us at www.hayescouplings.com